



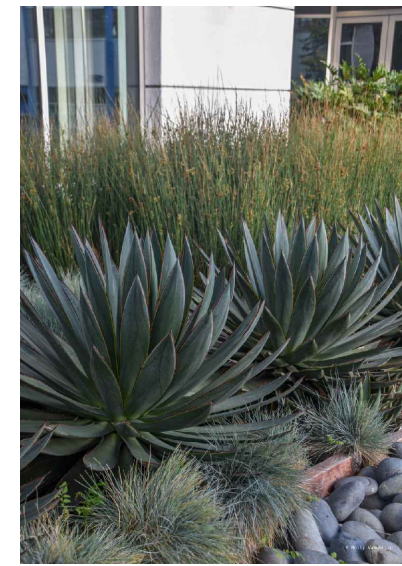
Atlas Fescue



Coral Aloe



Soft Rush



Blue Glow Agave



Little Ollie® Olive



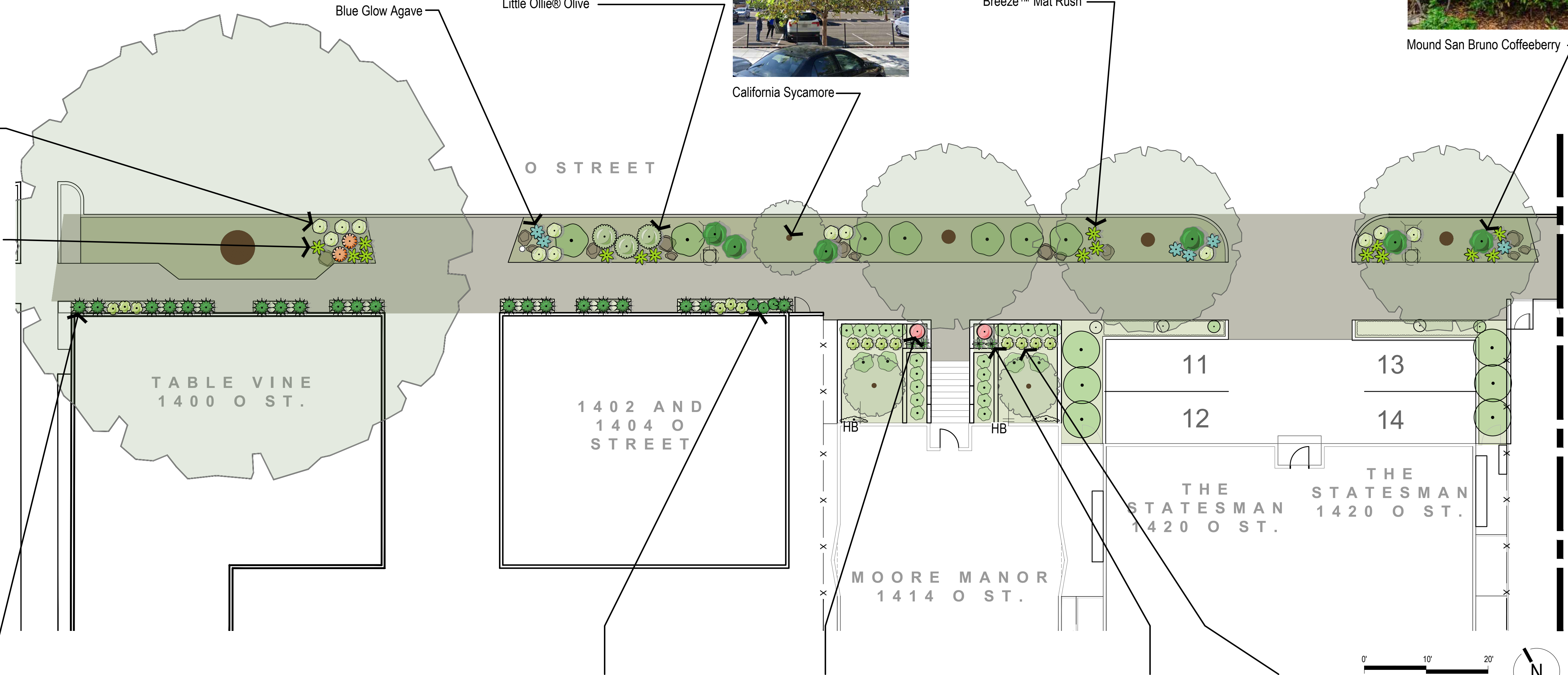
California Sycamore



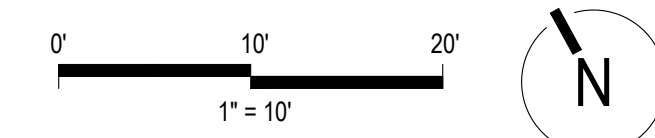
Breeze™ Mat Rush



Mound San Bruno Coffeeberry

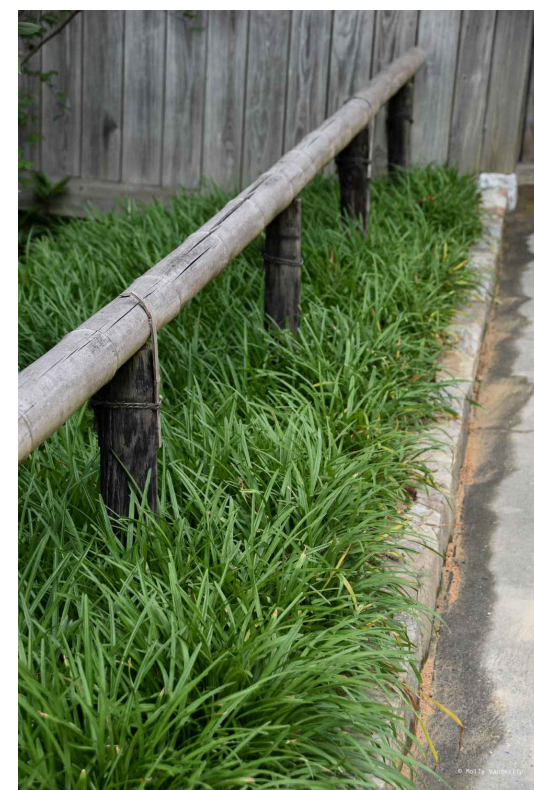


CONTINUATION LINE - REFER TO SHEET L3.2



PLANT LEGEND

SYMBOL	CODE	BOTANICAL / COMMON NAME	CONT	QTY
SHRUBS				
AG	BLG	AGAVE X 'BLUE GLOW' / BLUE GLOW AGAVE WUCOLS (L)	5 GAL.	8
AL	STR	ALOE STRIATA / CORAL ALOE WUCOLS (L)	5 GAL.	2
ER	GRA	ERIOGONUM GRANDE RUBESCENS / RED BUCKWHEAT WUCOLS (L)	5 GAL.	2
FES	MAI	FESTUCA MAIREI / ATLAS FESCUE WUCOLS (L)	5 GAL.	26
FRA	CYO	FRANGULA CALIFORNICA 'MOUND SAN BRUNO' / MOUND SAN BRUNO COFFEEBERRY WUCOLS (L)	15 GAL.	9
HEU	MAX	HEUCHERA MAXIMA / ISLAND ALUM ROOT WUCOLS (L)	1 GAL.	34
JUN	EFF	JUNCUS EFFUSUS / SOFT RUSH WUCOLS (M)	5 GAL.	21
JUN	ELK	JUNCUS PATENS 'ELK BLUE' / SPREADING RUSH WUCOLS (M)	5 GAL.	7
LIR	MUS	LIRIOPE MUSCARI / LILYTURF WUCOLS (M)	1 GAL.	23
LOM	BRE	LOMANDRA LONGIFOLIA 'LM300' / BREEZE™ MAT RUSH WUCOLS (M)	5 GAL.	32
OLE	LIT	OLEA EUROPAEA 'MONTRA' / LITTLE OLLIE® OLIVE WUCOLS (L)	5 GAL.	9



Lilyturf



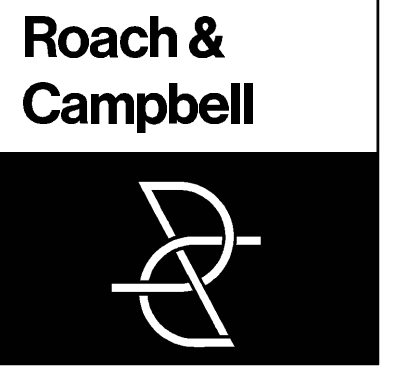
Rosy Buckwheat



Spreading Rush



Island Alum Root



947 Enterprise Drive Loft B
Sacramento,
California 95825
916.827.4020
4409 CRLA 5044

LANDSCAPE PLANS FOR
1400
Block of O
Street

BY CADA

KEYMAP:

PLANTING PLAN

DRAWN BY:

JLL

CHECKED BY:

DWC

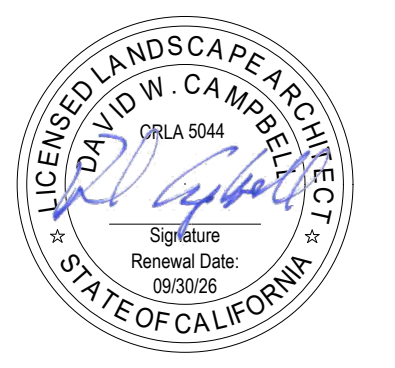
JOB NO.

24037J

DATE

1/14/2026

REVISIONS:



DATE SIGNED: 03/18/26

L3.0

DRAWINGS IN SET:

13



Blue Glow Agave



Breeze™ Mat Rush



Little Ollie® Olive

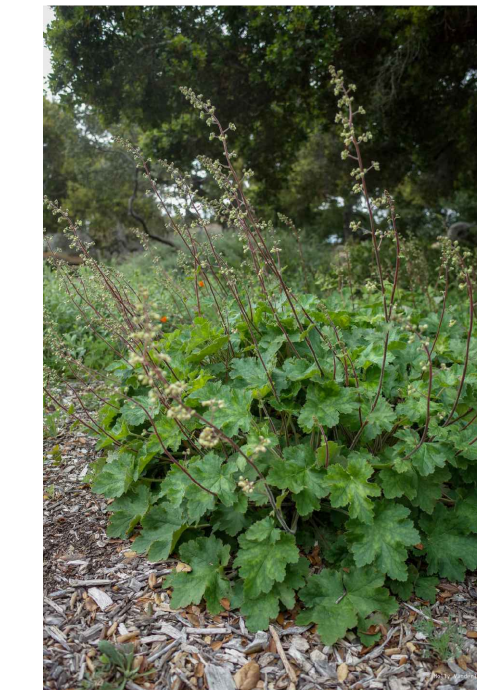
CONTINUATION LINE - REFER TO SHEET L3.1



Lilyturf



Atlas Fescue



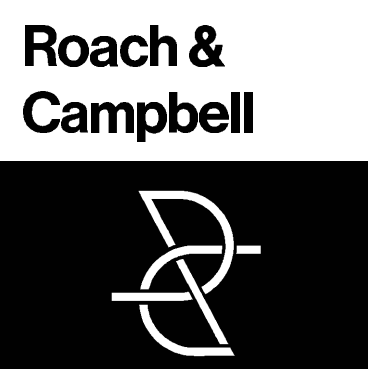
Island Alum Root



Mound San Bruno Coffeeberry



Spreading Rush



947 Enterprise Drive Loft B
Sacramento,
California 95825
916.827.4020
4409 CRLA 5044

**LANDSCAPE
PLANS FOR**
**1400
Block of O
Street**

BY CADA

KEYMAP:

PLANTING PLAN

DRAWN BY:

JLL

CHECKED BY:

DWC

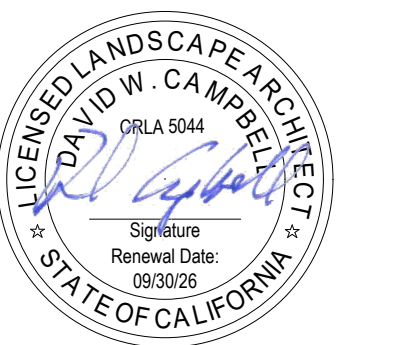
JOB NO.

24037J

DATE

1/14/2026

REVISIONS:



DATE SIGNED: 03/18/26

L3.1

DRAWINGS IN SET:

13